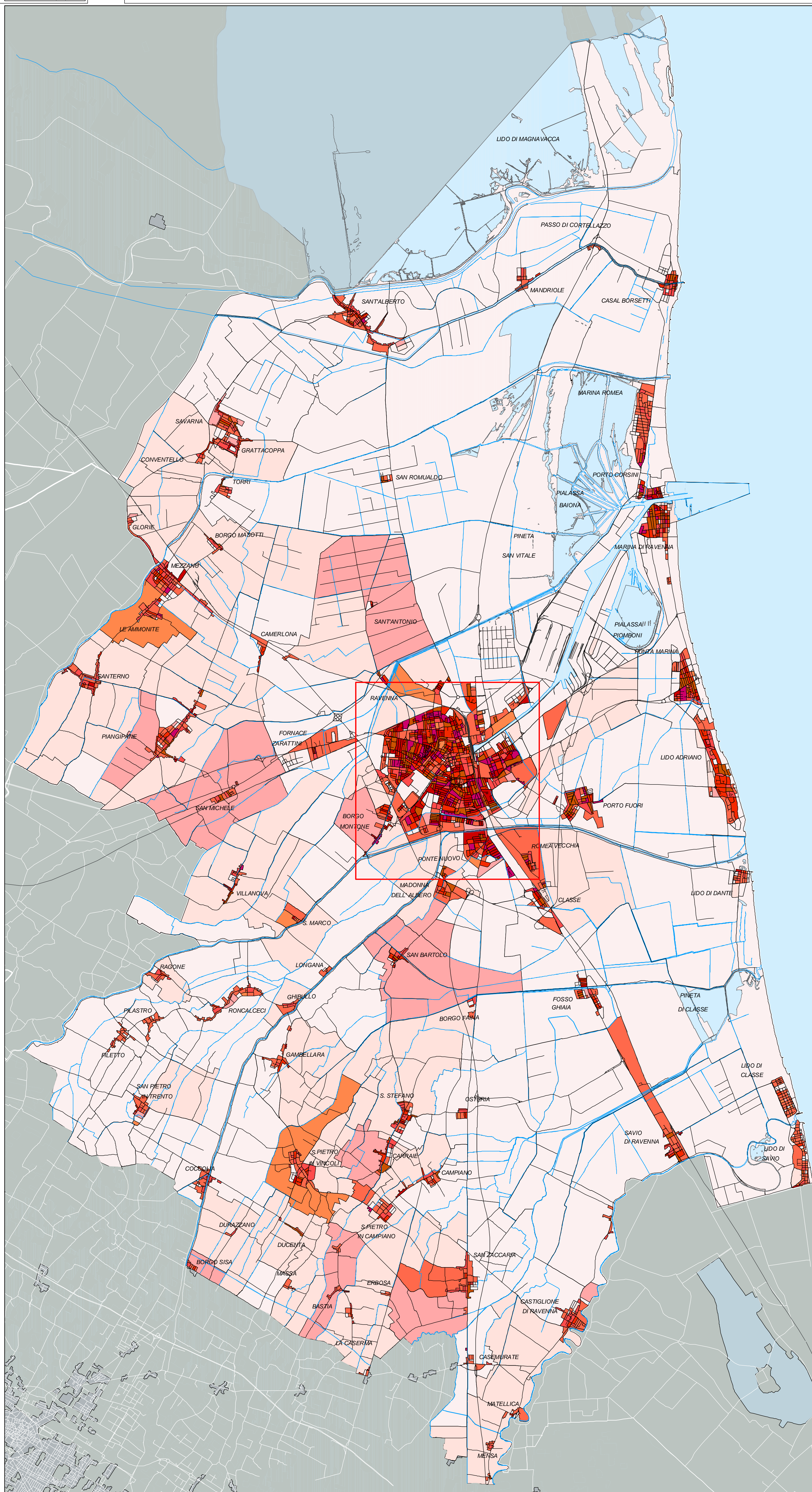
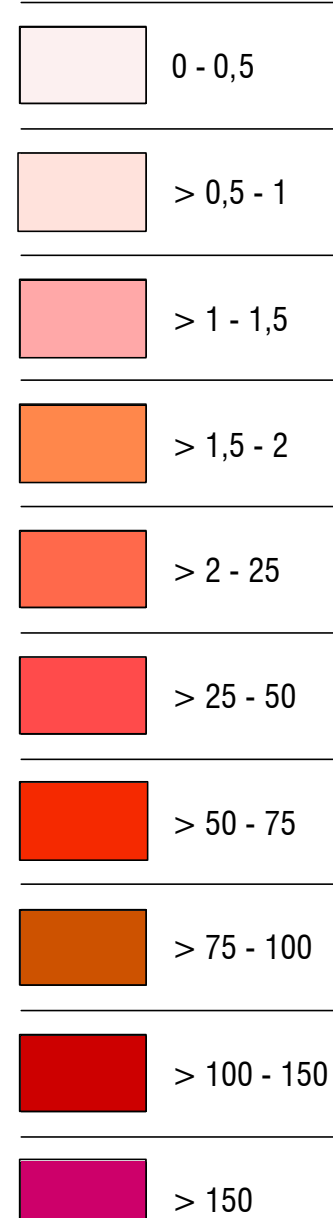


CARTA DELLA DENSITA' ABITATIVA: territorio

A.1.2.a

DEMOGRAFIA

DENSITA' (abitanti/ha) - Dati riferiti a gennaio 2003



Sindaco	Vidmer Mercatalli
Segretario Generale	Dott. Amedeo Pensierino
Assessore Urbanistica	Fabio Poggiali
CONSULENTI	
Consulente generale	Prof. Arch. Gianluigi Nigro
Collaboratori	Arch. Giovanni Maffei Arch. Francesco Miro Arch. Edoardo Preger
Consulente operativo	Prof. Enzo Tiezzi
Consulente sostenibilità ambientale	Arch. Riccardo Puletti
Collaboratori	

UNITA' DI PROGETTO
Responsabile
Coordinatore
Responsabile attività
Progettisti



Responsabile Ambiente
Istruttori Tecnici

S.I.T.

Arch. Franco Stringa
Arch. Alberto Muti
Arch. Francesca Proni
Arch. Leonardo Rossi
Arch. Antonia Tassinari
Dott.ssa Angela Vistola
Barbara Amadori
Francesca Brus
Davide Nitto
Ing. Giovanni Malkow
Dott. Alessandro Mori

	Segreteria	C
		F
	Segreteria	C
	Agenda 21	A
	Collaboratori	A
		C
		C
		A
		A

Giovanna Galassi Minguzzi
Franca Gordini
Dott.ssa Luana Gaspari
Arch. Stefania Bertozzi
Arch. Cristina Casadei
Dott.ssa Elisa Giunchi
Geom. Paolo Minguzzi
Arch. Elisabetta Santolir
Arch. Cinzia Zoli



A small map of the Mensa area, showing the location of the 'Mensa' building. The map is a simplified representation of the area, with the 'Mensa' building highlighted in red. The word 'Mensa' is written in black text on the map.



10

A.1.2.2